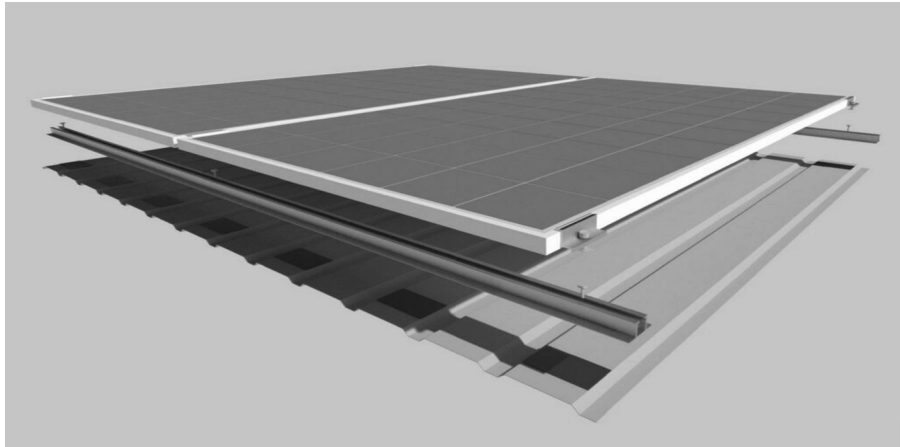


SOLUTIONS FOR SOLAR ENERGY

SL Quick Rail™ mounting system for PV elements on pitched roofs.



A. General Features:

Made from aluminum, lightweight. Anti-corrosion and high strength. Recyclable. Environment friendly. Handsome design.

The length of rails can be customized according to project: from 0,20m to 6,30m. Highly efficient transportation costs.

Color: mil finished or black anodized.

Easy to mount with unique clamps (made from aluminum).

SL Quick Rail allows portrait and landscape mounting of the PV element in the form of grid mounting thanks to the universal module clamps.

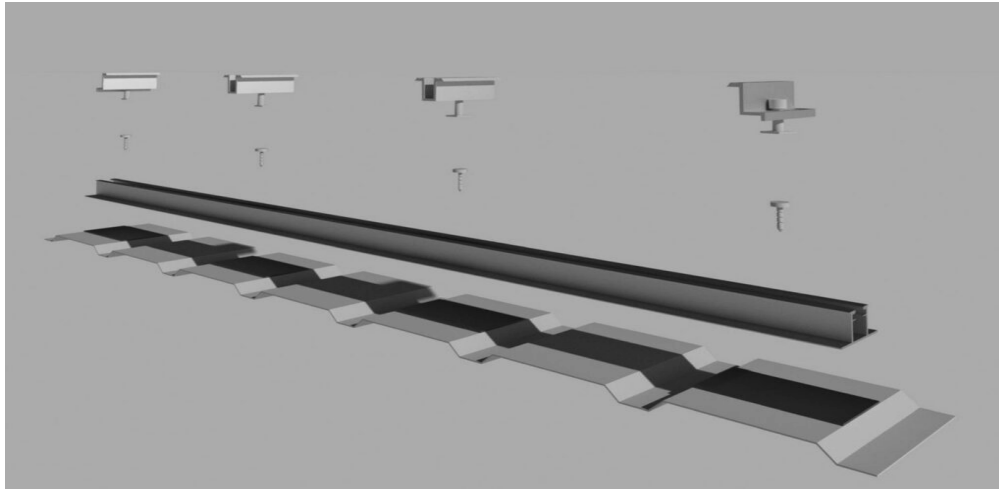
The system consists of very small number of components. It makes transportation, mounting and accounting simple and efficient.

B. Simple mounting:

1. Aluminum rails are stick to the roof with adhesive EPDM tape and fastened with self-tapping stainless-steel screws.
2. PV element is placed on the aluminum rail.
3. PV element is locked with easy-to-attach aluminum clamps.
4. **SL Quick Rail** allows portrait and landscape mounting of the PV element in the form of grid mounting thanks to the universal module clamps.

C. System Components

- Aluminum rail. On the sides (and in the middle) of the rail are made a special notch for the self-tapping screw. Color: mill finished.
- Stainless-steel self-tapping screw.
- PV element clamps (side and middle), consisting of: aluminum spec. profile, stainless steel bolts, and a lock nut that matches to the rail. Color: mill finished or black anodized.
- EPDM tape.



D. Basic Technical information

- Aluminum components: according to EN AW 6060 T63, EN AW 6063 T63
- Tensile Strength: 140-230 MPa
- Thermal expansion: up to 23,4
- Stainless Steel bolts: A2-70 according to DIN
- Rail length: from 0,2m to 6,30m.
- Insurance: Covered By Vienna Insurance Group. Product Liability for 50.000 EUR
- Made in EU

ISO 9001:2015 | ISO 14001:2015
BS OHSAS 18001:2007



Cert. TIC 15 100 181048 | TIC 15 104 181635
TIC 15 116 18884

TC EN ISO/IEC 17025



AB-1487-T

TC EN ISO/IEC 17020



AB-0550-M

